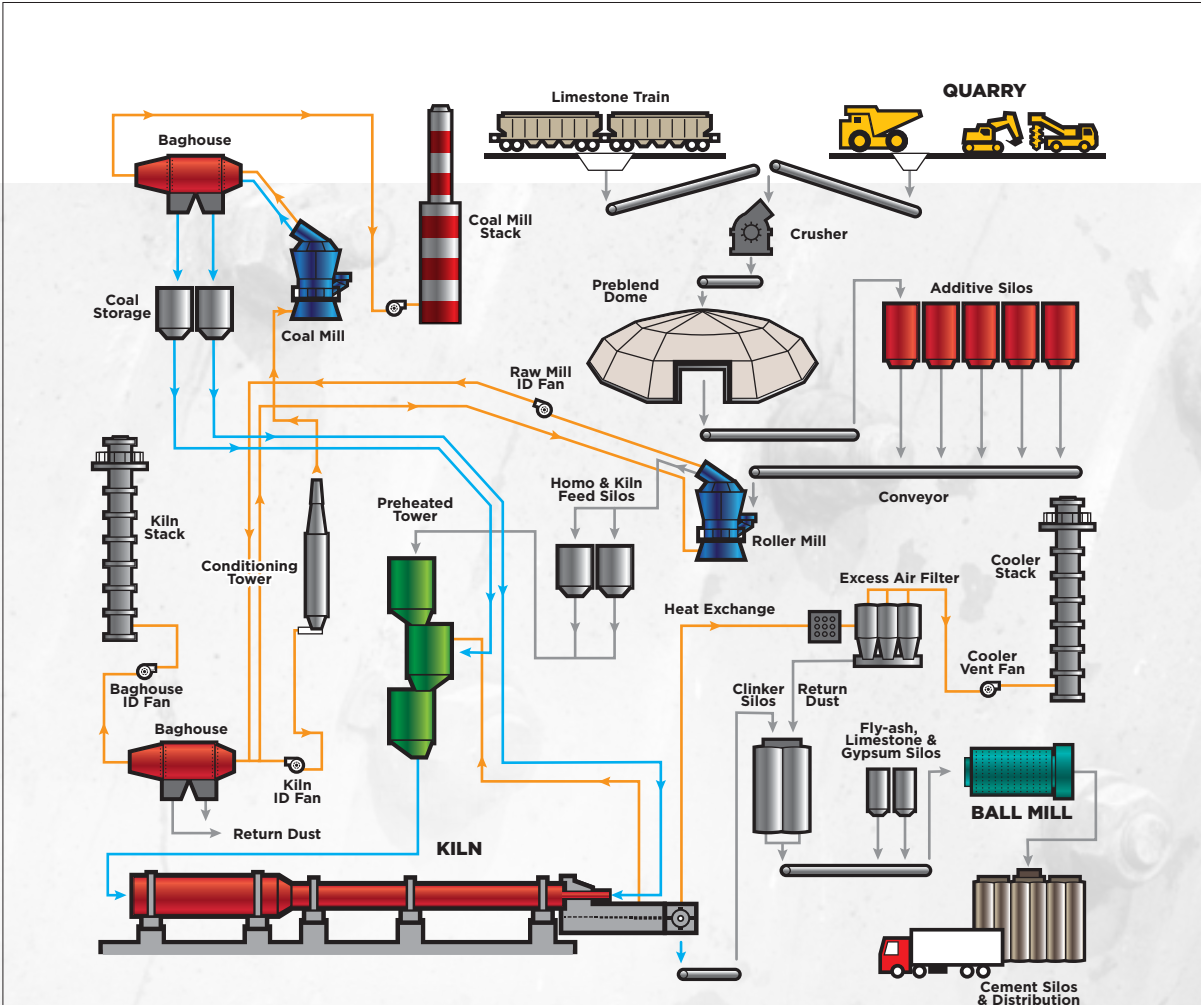




**C E M E N T
I N D U S T R Y
S O L U T I O N S**





Quarry

Drills

Steels and Rods
Matrix EP, Kopper Plate

Bearings and Pins
Matrix EP, Caliber M

Shovels

Open Gears, House Rollers and Dipper Sticks
GearMate 1000 ICT (GearMate 1000), SurStik 800

Shovel Bearings
Matrix EP, Caliber M

Enclosed Gearboxes

Paragon Gold, Guardian Breathers

Haul Trucks

Wheel Bearings and Chassis
Matrix EP, Caliber M

Conveyors

Bearings
Caliber M, Matrix EP

Enclosed Gearboxes
Paragon Gold, Guardian Breathers

Crushers

Enclosed Gearboxes
Paragon Gold, Guardian Breathers

Bearings
Caliber M, Matrix EP

Kiln

Open Gears

Envirolube XE Extreme

Trunnion Bearings

Decathlon PAG 1000, Paragon ISO 680

Tires, Trunnions and Slipper Pads
WBL-52

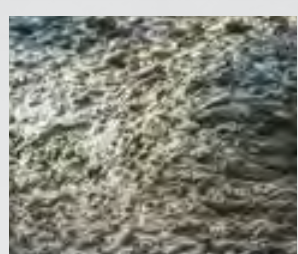
Primary Gearbox

Paragon Gold, Guardian Breather

Ball Mill

Open Gears

Envirolube XE Extreme



Whitmore's high-performance lubrication products perform in the harshest environments and in the most demanding applications. Our superior lubricants, lubrication management and desiccant breather products reduce wear, increase reliability, minimize downtime and prolong equipment life while lowering your operating and maintenance costs.

LUBRICATION DESIGNED FOR THE EXTREMES



Performance Lubricants

ENVIROLUBE® XE EXTREME (NON-ASPHALTIC OPEN GEAR LUBRICANT)

Whitmore's most highly recommended open gear lubricant. Created by adding proprietary anti-wear technology proven in enclosed-gear applications, Envirolube XE Extreme takes open-gear wear protection to a revolutionary new level. A market leader in open-gear lubrication, Envirolube XE Extreme extends the life of even the most severely loaded open gears. This lubricant smooths existing wear damage, restoring a smooth operating surface and ensuring cost savings through reduced friction, temperature and load.

Applications: *Ball Mill & Kiln Open Gears*

WBL-52 (DRY FILM LUBRICANT)

Water-based gel with super-fine synthetic graphite in suspension. WBL-52 must be diluted to 10:1 with water. This lubricant has excellent wetting ability on metal surfaces. It's a stable concentrate that has minimal separation before dilution and is easy to apply. To reduce wear, graphite is also applied to the contact area between tires, trunnions and slipper pads. Kiln tire and shell damage, including cracking and warping, can occur causing shutdowns if tires and slipper pads are not effectively lubricated.

Applications: *Kiln Tires, Trunnions and Slipper Pads*

DECATHLON™ PAG 1000 (SYNTHETIC OIL)

Specifically formulated for non water-cooled trunnion bearings. Decathlon PAG 1000 is particularly useful in extreme temperature conditions. Kiln trunnion bearings are subjected to extremely high load and fluctuating temperatures, challenging both equipment designers and lubricant chemists. Decathlon PAG protects this expensive equipment.

Applications: *Kiln Trunnion Bearings (non water-cooled)*

PARAGON™ ISO 680 (HEAVY-DUTY ENCLOSED GEAR OIL)

Extreme pressure protection is assured with Paragon™ ISO 680, even under the most severe conditions of high load, shock load and reversing motion. It is specially formulated to handle the demanding operating conditions kiln water-cooled trunnion bearings endure.

Applications: *Kiln Trunnion Bearings (water-cooled)*

MATRIX® EP (CALCIUM SULFONATE COMPLEX GREASE)

Matrix EP protects in difficult applications and conditions far beyond conventional grease. It protects against heat, high load, corrosion or infrequent lubrication. Matrix EP extends lubrication frequency using less grease, preventing premature wear.

Applications: *Quarry Drill Steels and Rods, Quarry Drill Bearings and Pins, Quarry Haul Truck Wheel Bearings and Chassis, Conveyor and Crusher Bearings*

CALIBER™ M (EXTREME PRESSURE GREASE with MoS₂)

Caliber 3M and 5M greases meet the original Caterpillar “MPGM” specification. These greases contain 3% and 5% molybdenum disulfide (MoS₂). Caliber 3M and 5M greases are designed primarily for use in heavy-duty rolling stock applications, earthmoving equipment, draglines, shovels and drills. Caliber 3M and 5M are perfect for wheel and slewing bearings, chassis points and U-joints, as well as pivot points and bucket pins. These greases form a protective barrier to reduce wear and extend lubricant life, reducing parts replacement and downtime. Caliber 3M and 5M’s Sub Zero grades are synthetic oil based for superior low temperature performance down to -30°F (-34°C).

Applications: *Quarry Drill Bearings and Pins, Quarry Shovel Bearings, Quarry Haul Truck Wheel Bearings and Chassis*



KOPPER PLATE (ANTI-SEIZE AND HYDRAULIC HAMMER COMPOUND)

Low-friction, anti-seize and hydraulic hammer, aluminum complex lubricant containing micro-size copper flakes and graphite. Kopper Plate contains a patented EP additive to provide extra protection no other compound can offer, providing a shield against metal-to-metal contact, thus preventing seizure and corrosion.

Applications: *Quarry Drill Steels and Rods*



PARAGON™ GOLD (EXTREME PRESSURE GEAR OIL)

The more difficult the application, the better Paragon Gold works. Its unique additive combination ensures smooth gear and bearing contact surfaces, even under the most punishing conditions of extreme load, reversing action and shock load. Paragon Gold is especially recommended for use where gears are pitted, scuffed or under unusually high load.

Applications: Quarry Shovel Enclosed Gearboxes, Crusher Enclosed Gears

SURSTIK® 800 (EXTREME PRESSURE LUBRICANT)

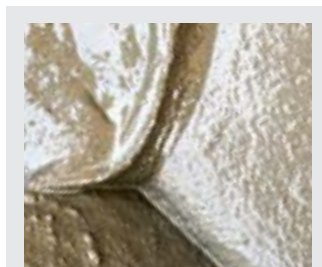
Designed with the latest technology in extreme pressure/anti-wear chemistry. SurStik 800 is a high-performance, extreme pressure lubricant formulated for use on open gears. It works well in highly loaded components under the punishing conditions and easily forms a protective film. SurStik 800 is highly resistant to being washed out.

Applications: Quarry Shovel Open Gears, House Rollers and Dipper Sticks

GEARMATE® 1000 ICT - GEARMATE® 1000 (MULTISERVICE OPEN GEAR LUBRICANT)

Whitmore's toughest lubricant recommended for use on shovels and draglines. GearMate 1000 ICT can be used on open gears, sticks, circle rails and rollers, bushings and heavily loaded bearings. This lubricant contains a high molecular weight polymer that resists drying, oxidation and thermal decomposition. It does not emulsify in water, making it ideal for components exposed to rain, ice and snow, and in many areas, a single grade can be used year-round. GearMate 1000 ICT is enhanced with an improved coating technology that establishes a dark, non-transparent coating on metal so operators can easily identify the lubricant is in its correct place and quantity.

Applications: Quarry Shovel Open Gears, House Rollers and Dipper Sticks





Lubrication Management

LUBRICATION WORK CENTER

Color-coded bulk storage keeps your storage area neat, safe and free of messy 55-gallon drums.

- Choice of OilSafe filtration, 25, 7 or 4 micron rating
- Modular and scalable, the unit can be configured to your exact need
- Arrives pre-assembled for easy setup
- Each tank has its own dedicated pump and filter to prevent cross-contamination
- Built-in spill containment to meet regulatory requirements

Applications: *Plant Maintenance Lube Rooms, Satellite Lube Rooms*



TRANSFER CONTAINERS

Precise-pour transfer containers eliminate spills and slowdowns.

- Ergonomic hand pumps
- Push-button air intake valves
- Quick-twist spouts for fast, smooth pumping and pouring
- Fully interchangeable drums available in multiple sizes and lids in 10 different colors
- Robust design for extended service life

Applications: *Plant Maintenance Lube Rooms, Satellite Lube Rooms*



FILTRATION UNITS

OilSafe's ground-breaking Filtration Units extend the life of your industrial oils, saving you time and money. They maintain purity from storage to application and eliminate cross-contamination with color-coded, error-proof, flat face, zero-leak quick connects. Discover the cleanest and safest filtration systems on the market with three layers of spill containment to include a removable primary containment vessel, preventing spills and waste. Available in portable and stationary configurations.

Applications: *Plant Maintenance Lube Rooms, Satellite Lube Rooms*



DRUM ADAPTER KIT

Drum Adapter Kits allow breathers to be installed on any storage tank or drum. There's never been a cleaner, more effective way to store, filter and pump lubricants from a drum. The unique design ensures all fluid handling is managed through dedicated adapters.



HYDRAULIC RESERVOIR ADAPTER KIT

Hydraulic Reservoir Adapter Kits allow breathers to be installed on any hydraulic fluid tank or reservoir. The aluminum adapters have quick connects in two sizes for pumping oil in and out, allowing the system to remain closed to the environment at all times, dramatically reducing contamination while improving oil-handling safety.



GEARBOX ADAPTER KIT

Gearbox Adapter Kits allow breathers to be installed on any gearbox. Oil can be pumped in or out without opening the gearbox to atmosphere. Offline filtration, oil changes and sampling can be handled through the adapter.





Desiccant Breathers & Add-Ons

The cement plant environment is hot, dusty and often humid. These conditions make Air Sentry® desiccant breathers a necessity for companies that desire maximizing equipment and fluid life while maintaining high cleanliness standards.

M-SERIES

M-Series breathers, designed from heavy-duty materials are capable of handling requirements of the most severe environments. They are ideal for demanding conditions with for heavy mobile equipment, high temperatures and corrosive chemicals.



X-SERIES

X-Series breathers are a great solution for high humidity and high dust environments. These breathers excel in quarries, paper mills, wash-down and steam-cleaning areas.



XR-SERIES

XR-Series breathers are designed to perform in any extreme environment where protection from dust, moisture and vibration is critical. These breathers are ideal for heavy-duty mobile equipment. They include a metal reinforced base, available with male NPT threads to adapt to your equipment. The base is designed to handle the rigors of high-vibration applications.



GUARDIAN® SERIES

GUARDIAN is Air Sentry's industry leading breather series. These breathers are the best solution for extreme conditions and environments and ideal for most applications. Some models feature an isolation check valve that keeps exhaust air from depleting the desiccant and protects from volatile fumes and splashing fluids. The GUARDIAN's casing is constructed from Tritan,® a patented material highly resistant to impact and chemicals with a broad range of operating temperatures. These unique features equate to a longer life for your breather and your equipment.



Applications: Gearboxes, Hydraulic Systems, Storage Tanks for Lubricants & Diesel Fuels*

Guardian Series Add-Ons

HIGH-CAPACITY AIR FILTER - GHCAF

Can be used with a desiccant cartridge or as a standalone particle filter. The High-Capacity Air Filters' 0.3-micron HEPA filter is 99.97% efficient. Ideal for extremely dirty/dusty environments.



MODULAR STACKABLE RING - GMSR

By using the Modular Stackable Ring, you are able to attach GUARDIAN breather cartridges to extend the service life. This stackable ring also allows for the addition of the High-Capacity Air Filter and Activated Carbon Filter.



SHIELD WASH-DOWN CAP - GSWDC

The cap provides a barrier in environments where equipment wash down happens frequently and in dusty environments. This prevents any direct spray from opening checkvalves in the top cap. The Shield Wash-Down Cap is designed for use in food processing, mining, cement, pulp and paper facilities and outdoors.



*Only Guardian models are to be used on diesel fuel applications and they must be accompanied with an isolation check valve. See Guardian models ending in NC, NG, NGC. Not available in models ending in N.



Established in 1893, Whitmore is a global leader in providing innovative products and services that increase the reliability, performance and lifespan of industrial assets. Whitmore manufactures high-performance lubricants, friction modifiers, application equipment, lubrication management systems, desiccant breathers and cleaners designed to meet the specific needs of each industry and application. Industrial customers worldwide rely on Whitmore to deliver the performance engineered solutions industry counts on, even in the most adverse conditions and demanding environments.

Whitmore maintains an industry-leading reputation for high-quality products and customer service. Its family of products and services are sold worldwide through a distribution network committed to technical support and total customer satisfaction.

Whitmore is headquartered in Rockwall, Texas, and includes a fully integrated manufacturing plant, leading-edge research and development center, training facility and corporate offices.



Follow us on



whitmores.com • sales@whitmores.com
+1.972.771.1000 • 800.699.6318

930 Whitmore Drive, Rockwall, TX, 75087 U.S.A.