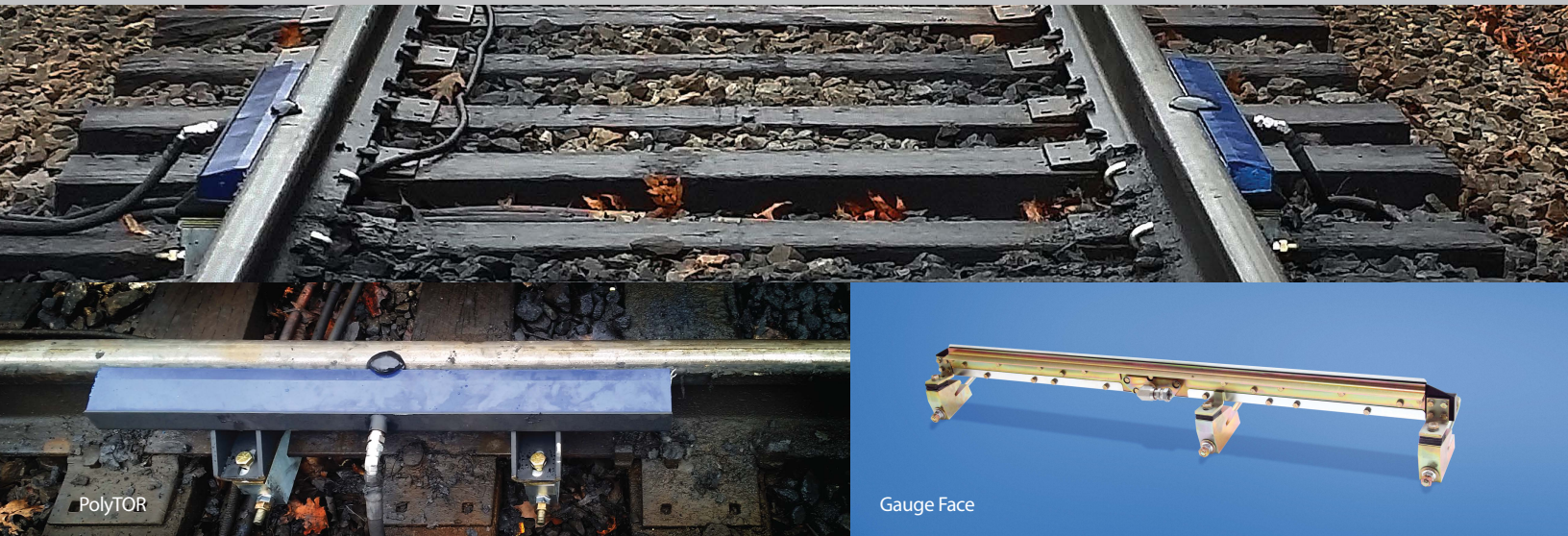




PRECISE DISTRIBUTION HELPS KEEP COSTS IN LINE.

Add Whitmore Wiping Bars to your Trackside Units.

WIPING BARS – GAUGE FACE AND TOP OF RAIL



Whitmore Rail offers some of the most advanced wiping bars in the world. Paired with trackside applicators for precise product distribution, these bars are specifically designed for quick and easy installation and maintenance. The low-maintenance Gauge Face and Top of Rail (TOR) Wiping Bars are suitable for freight and transit applications and fit all rail types. Designed for use with AccuTrack® and LubriCurve®, these bars are compatible with virtually any hydraulic, mechanical or electric applicators.

Gauge Face Wiping Bars

The Gauge Face Wiping Bars are specifically designed for gauge face lubricants and are available in 16", 24" and 60" lengths. All bars are available with or without an extended blade and trough for worn rail conditions. These bars can be used in pairs or individually, as needed. Whitmore Rail's Gauge Face Wiping Bars feature one inlet port and 8, 16 or 32 outlet ports with wide channels to reduce grease blockages.

PolyTOR™ Wiping Bars

The PolyTOR Wiping Bar is a revolutionary, heavy duty wiping bar designed to precisely distribute friction modifiers to the top of the rail. With a powder-coated frame and replaceable polyurethane body, this unique, durable wiping bar lasts longer on the track; it can absorb direct wheel impact and continue to apply friction modifiers. PolyTOR Wiping Bars allow easy maintenance for the life of the bar, from installation to replacement. At 36" long with a three outlet port, the wiping bars function in all weather conditions and are impact, wear and UV resistant, ensuring a longer life. The design excludes mechanical springs and allows for elastomeric dampening, protecting the wiping bar from false flanges and hi-rail vehicles.

U.S. Patent - US10960907

PolyTOR bar assembly w/NA clamps	WRL118-07
PolyTOR bar assembly w/o clamps	WRL118-08
PolyTOR bar (replacement insert w/fitting)	WRL118-04

- **Various sizes and mounting configurations available**
- **Abrasion-resistant front blade**
- **Easy maintenance**
- **Install, adjust and replace with ease**
- **User friendly, secure height adjustment**
- **Resists impact, wear and UV light**
- **No mechanical springs**
- **All weather**

whitmores.com

