

# ***RAIL APPLICATORS & TRACK-MOUNTED COMPONENTS***



**WHITMORE®**



## Electric Gauge Face And Friction Modifier Applicator - Single Track & Twin Track

### **AccuTrack®**

Available outside Europe

AccuTrack rail applicators are an advanced solution for rail lubrication that outperforms traditional mechanical and hydraulic applicators. Designed with input from leading freight and transit railroads, AccuTrack offers unparalleled flexibility, efficiency, and remote monitoring capabilities. Its innovative features allow one unit to replace multiple non-electric applicators. AccuTrack can be powered by a combination of sources, providing flexibility that allows you to choose a tailored system for your environment.

With its 363kg reservoir capacity, the applicator supports extended use and offers consistent output across all temperatures. AccuTrack's state-of-the-art features include directional pump output settings with a locomotive wheel skip feature, diagnostics for easy troubleshooting, and a prime button that enables continuous pumping, coupled with motor braking for accurate grease output. The applicator also includes a communications port for optional remote monitoring and soft-start pumps that reduce energy draws, improving battery life and solar regeneration. A pump feedback loop ensures precise and consistent output, while automatic battery disconnect switches prevent battery damage.

Safety is a top priority, with the "Train in Motion" feature restricting adjustments while trains are present, and plug-and-play watertight connections that eliminate the need for manual wiring or tools.

AccuTrack offers optional add-ons like remote monitoring and patented weight recognition technology, which significantly improve track maintenance safety. (Patented weight recognition of reservoir level by lbs or kg - US11325621 B2 | CA3081789 C)

- Can be supplied as needed with 60cm or 150cm wiping blades or 90cm PolyTOR wiping blade
- Convenient hatch for easy filling straight from a pail or Hi-Rail vehicle
- Can be powered by a combination of sources
- 363kg reservoir capacity



## Electric Gauge Face And Friction Modifier Applicator - Single Track & Twin Track

### ***Electro™ 10, 20***

Electro rail applicators provide technological advancements mechanical and hydraulic applicators can't offer including twin rail blades for multi-curve rail lubrication. Ideal for reverse curves, one unit can replace multiple existing applicators.

The robust galvanized cabinet houses the main components of the applicator. With systems pumping from 8 to 15 metres the cabinet can be located in a place of safety for easy maintenance and filling.

A twin chamber pump with direct gravity feed from the reservoir means there is no residual grease left in the reservoir. The grease is pumped to blades via twin output hoses, which allows blade staggering on left and right rails for optimum grease pickup.

Precise grease output is provided by a patented stepped control box setting and is independent of grease viscosity. Output is consistent year-round.

- Can be supplied as needed with 40cm or 60cm wiping blades or 60cm PolyTOR wiping blade
- Pumping initiated by a non-contact field or gauge side wheel sensor
- Mast mounted solar panel & wind turbine. mains electric, cabinet mounted solar panel
- Twin sleeper base
- Robust trackside cabinet with three point locking system for full height security door – no padlocks required
- Storage for up to three spare pails of grease
- Various blade options including full circumference blade
- Convenient hatch for easy filling straight from a pail
- Electro 10 - 90kg, Electro 20 - 200kg reservoir capacity



## Electric Gauge Face And Friction Modifier Applicator

### ***Electro™ 5***

Electro 5 electric rail applicator system provides a smaller and lower capacity unit with similar features to Electro 10, and 20. A smaller cabinet means the full benefits of an electric rail applicator can be utilized in areas where space is limited. The cabinet can be installed on a pole, wall, handrail or sleeper. In addition, the system can be powered by solar panels or electrical mains and offers full flexibility in all areas.

- Can be supplied as needed with 40cm or 60cm wiping blades or 60cm PolyTOR wiping blade
- Economical
- Installation on post or frame
- Step based output control option
- 35kg reservoir capacity



## Electric Friction Modifier Applicator

### ***FrictionEase™***



High rail and check rail lubrication have now become good practice around the world to provide extended rail and wheel life. As we increase our understanding of the relationship between rail and wheel, we see other factors coming into play. It is now evident that material is needed on the head of the rail to help reduce squeal, corrugation, lateral force low rail RCF and excessive energy consumption. Using our electric rail applicators to apply friction modifiers to the head of the rail will help overcome these issues.

Friction modifier can be picked up and applied along the head of the rail by passing wheels from the blades.

- Can be supplied as needed with 60cm PolyTOR wiping blade
- Applied from electric applicators
- Carry more than 1km
- Reduces squeal
- Reduces low rail RCF to give large operating cost reductions
- Reduces energy consumption



## Mechanical Rail Applicator

### ***LubriCurve® PD50***

LubriCurve PD50 is a simple, efficient applicator that provides high performance with low maintenance. Easy to install and suitable for all types of rail profile. Whitmore applicators are in use worldwide. A patented positive displacement pump dispenses a consistent grease volume ideal for high or low speed traffic with minimal plunger movement. This ensures reduced wear on plungers and results in less maintenance. Grease output isn't speed dependent and can be set for low output, a factor often essential for light rail and tramway lubrication.

Distribution blades can be supplied in various lengths and the modular design enables easy installation and replacement with minimal blocking. There is simple blade height adjustment for precise delivery of grease to wheel flange and optional blade troughs to collect excess grease for easy cleaning. Blades can be fitted for high rail lubrication, check rail lubrication or both rails for reverse curve lubrication from one unit.

Reservoirs are robust, durable, lightweight aluminum and designed for quick fill. Sizes available include 6kg, 9kg, and 35kg. New products include low clearance reservoirs and clamps for use with slab track.

- Easy to install
- Low maintenance
- Suits all rail types
- Parts compatible with other mechanical and hydraulic systems
- Positive displacement pump (standard & low output options)
- Modular blade design, variable blade size
- Standard, EasiBlade & EasiCheck options
- Blade trough
- Robust, lightweight reservoir in 6kg, 9kg, or 35kg capacity



## **Single Pump, Low Volume Output, Mechanical Applicator for Switches & Crossings**

### ***EasiPoint™***

EasiPoint system has been developed as a cost effective true alternative to canister lubrication for S&C.

The EasiPoint system incorporates both EasiPump™ and EasiBlade™ technology, which allows for quick and simple installation and maintenance. Both pump and blade can be pivoted away from the rail face for grinding with no loose parts and then refitted easily and quickly.



- S&C and Point Tip Lubrication
- Economical
- All track parts pivot away for grinding
- No loose parts
- Quick to install
- Ideal for light and heavy haul railways
- Fits all rail profiles
- 6kg, 9kg, or 37kg reservoir capacity

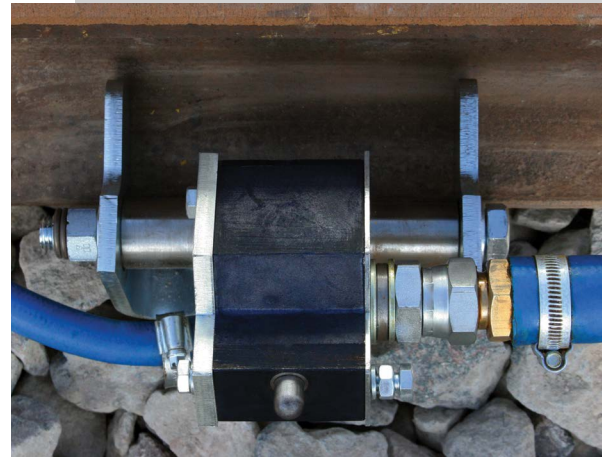
## Pivoting Single Pump Mechanical Rail Applicator

### ***EasiPump™***

EasiPump has been designed as an alternative to the standard Whitmore double pump unit. Based on the same positive displacement technology, it gives a lower cost option for running rail and check rail lubrication. A single clamp ensures quick installation and the pivoting clamp system means both the pump and the blades can now be lowered away from the rail face when rail grinding (no loose items).

An EasiPump rail applicator can be used for conventional high rail lubrication and can act as a true alternative to switch blade canister systems that pump fixed amounts of grease irrespective of the type of train passing through. However, EasiPump delivers grease when and where it's required dependent on train activation.

- Economical
- Single Whitmore positive displacement pump
- Available with one or two blades
- Ideal for light and mainline railways
- Point tip lubrication
- Fits all rail profiles
- Quick to install
- Ideal for check rail and running rail applications
- Short curve lubrication
- Pivoting pump
- 9kg or 37kg reservoir







**40cm Blade with Steel Thin Front Plate and Trough**



**60cm Blade with Trough**



**Low Clearance Blade and Back Clamp**

## Running Rail Wiper Blade

### ***EasiBlade™***

EasiBlade is specially designed for quick, easy installation and maintenance for all types of running rail worldwide. Eight or sixteen large ports and wide grease channels reduce grease blockages and simple removal of bolts exposes the inside of the blade for fast cleaning.

The unique pivoting mechanism allows lowering of the blade for rail grinding without removal of any parts. This reduces time and component losses. EasiBlade can be used with any make of electric, mechanical, hydraulic or canister rail applicators.

- 40cm or 60cm length blade options (60cm or 150cm length blades available outside Europe.)
- Single point attachment
- Speedy installation
- Simple quick and easy maintenance
- High quality anti-vibration nuts
- Drops away from rail prior to grinding and lifts after grinding
- No loose parts
- Variants for all rail types
- 12mm or 16mm hose options
- No gaskets
- Choice of 10mm or 15mm grease ports
- Aluminium or steel fronts
- Low clearance EasiBlade available for concrete slab track installations

## Friction Modifier TOR Blade

### ***PolyTOR™***

PolyTOR Wiping Blades are a revolutionary, heavy duty wiping blade designed to precisely distribute friction modifiers to the top of the rail. With a powder-coated frame and replaceable polyurethane body, this unique, durable wiping bar lasts longer on the track; it can absorb direct wheel impact and continue to apply friction modifiers.

PolyTOR allows easy maintenance for the life of the blade, from installation to replacement. At 90cm long (US Version) - 60cm long (UK Versions) with a three outlet port, the wiping blades function in all weather conditions and are impact, wear and UV resistant, ensuring a longer life. PolyTOR's propriety and patented technology gets the majority of friction modifier on the rail instead of being splashed onto the field.

U.S. Patent - US10960907

- Heavy duty
- Precise distribution
- Easy maintenance







## Check Rail Blade

### ***EasiCheck™***

Our EasiCheck Blade is easy to install on all types of check/restraining rail profiles. Six large ports and wide grease channels reduce grease blockages, and our simple to remove top plate allows easy access to the inside of the blade for cleaning.

Whitmore check rail blades can be used on any make of electric, mechanical, hydraulic or canister rail applicators.

- Removable top section for easy access to grease channels
- Speedy installation
- Simple, quick and easy maintenance
- Minimize port blocking, minimize maintenance
- Suits all check rails
- 12mm or 16mm hose options
- Suitable for Whitmore applicators and other applicators

## Contact Us



+972.771.1000 | +44 1707 379870  
[whitmores.com](http://whitmores.com)

**Friction Control Made Easy.**

