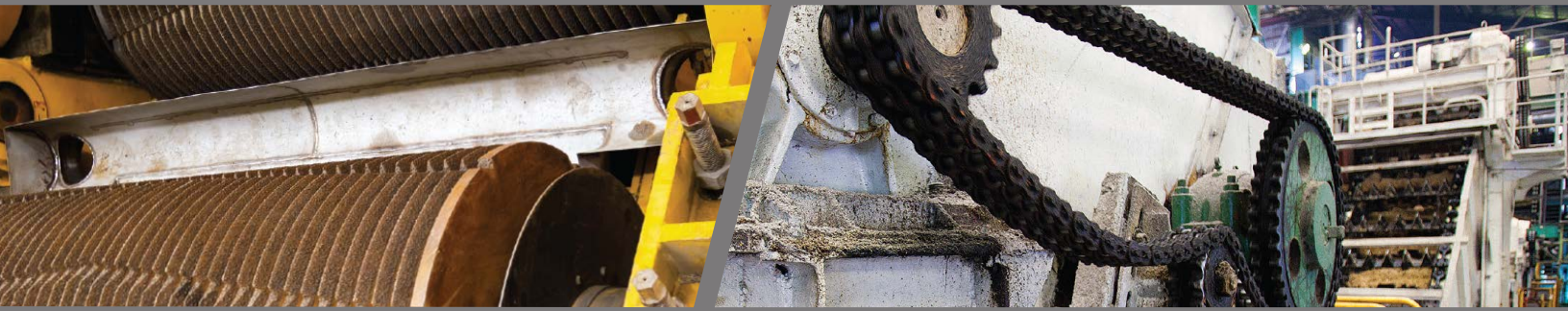


YIELD MORE SUGAR AND SWEETEN PROFITS. WHITMORE LUBRICANTS.

Whitmore understands that the processing of sugar is rough on critical equipment, using our high performance oils and greases will help keep it operating at peak performance no matter how severe the load. Let Whitmore show you how to reduce your costs by extending the life of bushings, bearings, conveyor chains, turbines, centrifuges, compressors and more.





MillGuard™

MillGuard is a high-viscosity fluid based on petroleum resin. It has extraordinary adhesiveness and extreme pressure resistance. MillGuard was developed primarily for use on heavily loaded bushings, and is ideal for use on severely loaded sugar mill bushings. It contains additives for neutralizing acidity and combating corrosion.

Grades: Light, Medium

Packaging: Pails, Kegs, Drums, Nonreturnable Totes

Paragon™ Gold

Paragon Gold is an extreme-service gear oil. Its unique, low-sludge additive combination ensures smooth gear and bearing contact surfaces, even under the most punishing conditions of extreme load, reversing action and shock load. In addition to counteracting excessive wear, the eutectic smoothing effect of Paragon Gold will partially flatten pre-existing wear damage, usually within a few hundred hours of operation. Paragon Gold is ideal for use where long component life is essential, or where long intervals between oil changes are unavoidable. Applications where conventional oils fail, Paragon Gold excels.

ISO Grades: 220, 320, 460, 680, 1000, 1500

Packaging: Pails, Drums, Nonreturnable Totes

Matrix® EP

Matrix EP is a heavy-duty formulation in the Whitmore line of extreme pressure greases. This calcium sulfonate complex grease is noted for its long service life, reducing re-lubrication frequency. Matrix EP is ideal for bearings and highly recommended for difficult applications such as extreme pressure, water, heat or chemical attack.

Grades: EP 0, EP 1, EP 2

Packaging: Cartridges 50/case, Pails, Kegs, Drums, Nonreturnable Totes

Hyperion™ Synthetic Blend

This high performance oil brings together several developments in both base oil and additive technology to create a true multifunctional product. Hyperion Synthetic Blend oils meet the needs of today's high precision hydraulic systems, turbines and air compressors.

Grades: ISO 32, 46, 68, 100, 150, 320

Packaging: Pails, Drums

GearMate® 1000 ICT

GearMate 1000 ICT is specially formulated for use on open gears. It contains a high molecular weight polymer that resists drying, oxidation and thermal decomposition; this is extremely helpful in areas of high moisture contamination. The blend of solid and oil-soluble anti-wear additives provides superior load carrying ability. GearMate 1000 ICT deposits a dark, non-transparent coating on metal. The dense black coating lets the operator know that the lubricant is in place at the right quantity.

Grades: Arctic, All-Season, Light, Heavy, Super Heavy

Packaging: Pails, Drums, Nonreturnable Totes

- **Extend equipment life**
- **Maintain efficiency**
- **Reduce downtime**
- **Lower operating costs**



Follow us

whitmores.com

**800.699.6318
972.771.1000**

