

**M I N I N G**  
.....  
**P E R F O R M A N C E**  
.....  
**L U B R I C A N T S**





For over 130 years, Whitmore has set the lubrication standard in the mining industry's most demanding environments. Our mining lubricants are trusted for their high-performance solutions, ensuring that mission-critical equipment operates at peak efficiency.

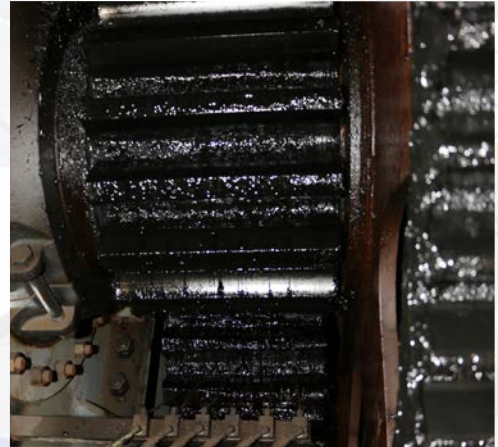
**LUBRICATION**

.....

**DESIGNED FOR THE**

.....

**EXTREMES**



Whitmore offers a complete range of mining lubricants designed to meet the unique demands of the mining industry. Our selection includes multi-service lubricants, extreme pressure greases, enclosed gear oils, propel machinery lubricants, and wire rope lubricants.

## **MULTI-SERVICE LUBRICANTS**

### **GEARMATE® 1000 ICT**

Whitmore's toughest lubricant recommended for use on draglines and shovels. GearMate 1000 ICT can be used on open gears, sticks, circle rails and rollers, bushings and heavily loaded bearings. This lubricant contains a high molecular weight polymer that resists drying, oxidation and thermal decomposition. It does not emulsify in water, making it ideal for components exposed to rain, ice and snow, and in many areas, a single grade can be used year-round. GearMate 1000 ICT is enhanced with an improved coating technology that establishes a dark, non-transparent coating on metal so operators can easily identify the lubricant is in its correct place and quantity.

### **SURSTIK® 800**

Designed using the latest technology in extreme pressure/antiwear chemistry, SurStik 800 is a high-performance, extreme pressure lubricant formulated for use on open gears. It works well in highly loaded components under the most punishing conditions and easily forms a protective film. SurStik 800 is highly resistant to being washed off by over-lubrication.

### **SURTAC® 2000**

Surtac contains molybdenum disulfide and graphite solid lubricants which provide a durable protective coating without the use of asphalt, solvents or lead. It is suitable for use on dragline open gears, slow moving bearings and bushing. Surtac 2000 minimizes metal-to-metal contact and wear. When correctly applied, Surtac 2000 forms a matte, non-greasy film, this makes it particularly useful in very dusty environments.



### CALIBER® 460M

Caliber 460M is a robust, lithium complex grease containing molybdenum disulfide. It's designed to lubricate components of earthmoving heavy-duty equipment and rolling stock. Caliber 460M provides extended service intervals and reduces wear.

### CALIBER® XR

Caliber XR is the most robust, lithium-based, bearing grease in the Whitmore lubricant line. This extreme pressure grease is designed for heavy duty applications. Whitmore recommends this product where the most severe, high and shock loads are encountered. Applications include slew rings on mining and forestry equipment, rolling stock and heavily loaded industrial equipment such as mills, grinders and more. Ideal for warm climates.

### LEGACY™ M

Legacy M is designed for use on mining equipment where low temperature pumpability is important. It can be pumped at temperatures down to -50°F (-46°C).

### NOVAGARD® EP2

Designed to lubricate anti-friction bearings and bushings, Novagard EP2 is recommended for pivot points and bucket pins on earthmoving equipment as well as vehicle chassis points and U-joints. It protects against shock loads, welding and scoring, resulting in fewer replacement parts and reduced downtime. Novagard EP2 is recommended for cold climates, the softest grade can be used at 20°F (7°C).

	Matrix EP	Caliber 3M & 5M	Caliber Blue EP	Caliber 460M	Caliber XR	Legacy M	Novagard EP 2
Major Applications	All purpose; protects against water, heat, extreme pressure	Earthmoving equipment and rolling stock	Earthmoving equipment and rolling stock in warm climates	Earthmoving equipment and rolling stock	Earthmoving equipment and rolling stock in hot climates	Mining equipment where low temperature pumpability is needed	Draglines, shovels, excavators, trucks, conveyors and other rolling stock in cold climates
Thickener Type	Calcium sulfonate	Lithium complex (3M Arctic: Synthetic Oil)	Lithium	Lithium complex	Lithium	Aluminium Complex with molybdenum synthetic oil	Aluminium Complex
Comments	Robust grease for virtually any bearing	Superior Caterpillar specification grease with 3% or 5% molybdenum	Very high extreme pressure performance	Certified by Bucyrus International (Caterpillar) for use on heavy duty ball, roller and plain bearings	For high load, slow speed and contamination	High water resistance, low temperature pumpability	Lubricates antifriction bearings and bushings
Climate	All but Arctic	All	Warm	Warm	Warm	Temperate to Arctic	Temperate to Arctic

## ENCLOSED GEAR OILS

### PARAGON™

Whitmore's work horse. This robust gear oil has been protecting gearboxes for over three decades. Paragon has earned a reputation for its long life, low foaming tendency and wear protection under high load.

### PARAGON™ GOLD

The more difficult the application, the better Paragon Gold works. Its unique additive combination ensures smooth gear and bearing contact surfaces, even under the most punishing conditions of extreme load, reversing action and shock load. Paragon Gold is especially recommended for use where gears are pitted, scuffed or under unusually high load.

### DECATHLON® F

Approved by Flender (Siemens), this fully synthetic gear oil is designed for use in helical bevel and planetary gears. Decathlon F can be used in a variety of industrial and mobile equipment, including mixed fleets. It protects against scoring, scuffing and galling to increase gear and bearing life. It also protects seals and keeps operating temperatures low.

### DECATHLON® EXTREME

Created for use under adverse conditions, Decathlon Extreme meets the performance requirements of the American Gear Manufacturer's Association (AGMA) specification 9005-D94. It performs in the harshest conditions, such as heavily loaded gears, shock loading and high temperatures due to hot, ambient conditions. This high-performance synthetic gear oil also meets Bucyrus requirements for use in non-planetary gearboxes.



### PARAGON™ SYN BLEND

Synthetic components in Paragon Syn Blend allow it to be used in temperature ranges from -40°F (-40° C) to 275°F (135°C). This lubricant reduces gearbox operating temperatures and helps dislodge the sludge that often remains from the previous use of inferior products.

	Paragon	Paragon Gold	Decathlon F	Decathlon Extreme	Paragon Syn Blend
<b>Grades</b>	ISO 68, 100, 150, 220, 320, 460, 500, 680, 1000 and 1500	ISO 150, 220, 320, 460, 680, 1000 and 1500	ISO 320	ISO 150, 220, 320, 460, 680 and 1000	ISO 150, 220, 320, 460, 680 and 1000
<b>Bucyrus Approvals: Draglines</b>	ISO 460, 1000 and 1500 approved for all gearboxes except planetary swing. ISO 320 approved for swing gearboxes	Approved in all gearboxes except planetary swing	ISO 320 approved for planetary swing gearboxes where temperature can go below 14°F(10°C)	ISO 460 and 1000 in all gearboxes except planetary swing	ISO 460 and 1000 in all gearboxes except planetary swing
<b>Bucyrus Approvals: 495 Series Shovels</b>	ISO 320 approved for non-Flender gearboxes	N/A	ISO 320 approved for Flender gearboxes and all gearboxes operating under 14°F(10°C) ambient	Approved by Flender (Siemens)	N/A
<b>P&amp;H Gear Oil Specifications</b>	Meets specifications No. 497	Meets specifications No. 497	Meets specifications No. 497	ISO 150 to 1000 meet specification No. 497	Meets specifications No. 497



# PROPEL MACHINERY LUBRICATION

## WHITSLIDE® EXTREME

Intended for use on the slide boxes of Bucyrus 2500 series draglines. WhitSlide Extreme helps smooth the areas where metal-to-metal contact occurs under high load. It forms a tenacious coating on sliding surfaces, reducing friction, heat and wear. WhitSlide Extreme keeps the walking temperature low.

## WHITCAM® NH

WhitCam NH is specifically designed to satisfy the rigorous requirements of the Monighan Cam walking mechanism. The performance of this high technology lubricant has been proven in severe field service. Draglines walk without vibration, chatter and little wear. It forms a tenacious coating on metal surfaces and protects against wear while providing extreme load-carrying ability.

## WHITCAM® EXTREME

Formulated with anti-wear additives combined with solid lubricants and a high-viscosity base fluid, WhitCam Extreme stays on the cam and provides a visible coating, making it easy for operators to determine when to re-apply.

	<b>WhitSlide Extreme</b>	<b>WhitCam NH</b>	<b>WhitCam Extreme (pumpable)</b>
<b>Applications</b>	Use on Bucyrus 2500 series dragline side mechanisms	Monighan cams	Monighan cams
<b>Comments</b>	Prevents overheating on deadheads	Performance has been proven in severe field service	Creates a darker, more visible coating
<b>Grades</b>	Medium, heavy	Medium, heavy	For warm to tropical climates
<b>Low Temperature Pumpability</b>	20°F (29°C)	30°F (-1°C)	32°F (0°C)

## DRAG ROPE LUBRICANT HF

With extreme pressure and anti-wear additives combined with rust and corrosion inhibitors, Drag Rope Lubricant HF protects the drag ropes from abrasion due to soil and rocks and also prevents wear on sheaves, especially when the sheave rotates momentarily in the opposite direction to the travel of the ropes. It is easily applied by automatic or manual systems and forms a dense coating on the surface of the rope.

## WIRE ROPE LUBRICANT

Every time a wire rope bends or flexes, the internal strands rub together. Wire Rope Lubricant penetrates to coat these strands to prevent friction and wear. It produces a nondrying, tack-free film on outer rope strands while quickly penetrating to the rope core and remains flexible, even in the most extreme weather conditions.



	<b>GearMate 1000 ICT</b>	<b>SurStik 800</b>	<b>Surtac 2000</b>
<b>Major Applications</b>	Draglines, shovels, kilns, and mill open gears	Draglines, shovels, kilns, and mill open gears	Draglines, open gears, bushings, and bearings
<b>Thickener Type</b>	Lithium	Aluminum Complex	Bentone Clay
<b>Comments</b>	Used for open gears, sticks, circle rails and rollers, bushings, and large heavily loaded bearings	Meet Bucyrus SD4713 and P&H 520 specifications	Extensively used on open gears and house rollers of draglines
<b>Grades</b>	Arctic Light Heavy Extra Heavy Super Heavy	Arctic Medium Heavy Super Heavy	Surtac 2000 Surtac 2000 RD Surtac 2000 HD Surtac 2000 XD
<b>Low Temperature Pumpability</b> (softest grade)	-40°F (-40°C)	-40°F (-40°C)	-40°F (-40°C)

## EXTREME PRESSURE GREASES

### MATRIX® EP

Whitmore's best bearing grease for demanding applications. Matrix EP protects in difficult applications and conditions far beyond conventional grease. It protects against heat, high load, corrosion or infrequent lubrication. Matrix EP extends lubrication frequency using less grease, preventing premature wear.

### CALIBER® 3M & 5M

Caliber 3M and 5M greases meet the original Caterpillar "MPGM" specification. These greases contain 3% and 5% molybdenum disulfide (MoS<sub>2</sub>). Caliber 3M and 5M greases are designed primarily for use in mining equipment, such as draglines, shovels, drills, earthmoving equipment and other heavy-duty rolling stock applications. Caliber 3M and 5M are perfect for wheel and slewing bearings, chassis points and U-joints, as well as pivot points and bucket pins. It forms a protective barrier to reduce wear and extend lubricant life, reducing parts replacement and downtime. Caliber 3M arctic grade is synthetic oil based for superior low temperature performance down to -30°F (-34°C).

### CALIBER® BLUE EP

Ideal for heavy earthmoving and industrial equipment, the Caliber Blue EP is perfect for heavy-duty plant lubrication, high load applications and applications involving extreme pressure. This performance grease reduces downtime and replacement costs by protecting equipment against scoring and high shock load conditions. Caliber Blue EP has become known for its high resistance to water and a high degree of rust protection. Its bright blue color acts as an identifier, making accidental mixing with other greases virtually impossible. This tacky, lithium grease excels in warm climates. Caliber Blue EP excels in warm climates.

	Drag Rope Lubricant HF	Wire Rope Lubricant
<b>Type</b>	Asphalt with diluent	Penetrating anti-wear oil
<b>Applications</b>	Dragline dragropes and all wire ropes that tend to wear from the outside	Hoist ropes on draglines and shovels and all wire ropes that tend to wear from the inside
<b>Comment</b>	Solvent evaporates leaving a dense protective film to protect the outer strands	Very low surface tension promotes deep penetration, protecting inner strands
<b>Base Oil Viscosity</b>	783,000 cSt @ 40°C* (before diluent added)	22 cSt @ 40°C*
<b>Viscosity of Finished Product</b>	1,736 cSt @ 40°C	1,736 cSt @ 40°C (contains no diluent)



## DESICCANT BREATHERS & ADD-ONS

The mining environment is hot, dusty and often humid. These conditions make OilSafe’s desiccant breather line, Air Sentry®, a necessity for companies that desire maximizing equipment and fluid life while maintaining high cleanliness standards.

### GUARDIAN SERIES

GUARDIAN is Air Sentry’s industry leading breather series. These breathers are the best solution for extreme conditions and environments and ideal for most applications. Some models feature an isolation check valve that keeps exhaust air from depleting the desiccant and protects from volatile fumes and splashing fluids. The Guardian’s casing is constructed from Tritan,® a patented material highly resistant to impact and chemicals with a broad range of operating temperatures. These unique features equate to a longer life for your breather and your equipment.

Applications: Gearboxes, Hydraulic Systems, Storage Tanks for Lubricants & Diesel Fuels\*



### GUARDIAN SERIES ADD-ONS

#### HIGH-CAPACITY AIR FILTER - GHCAF

Can be used with a desiccant cartridge or as a standalone particle filter. The High-Capacity Air Filters’ 0.3-micron HEPA filter is 99.97% efficient. Ideal for extremely dirty/dusty environments.



#### MODULAR STACKABLE RING - GMSR

By using the Modular Stackable Ring, you are able to attach GUARDIAN breather cartridges to extend the service life. This stackable ring also allows for the addition of the High-Capacity Air Filter and Activated Carbon Filter.



#### SHIELD WASH-DOWN CAP - GSWDC

The cap provides a barrier in environments where equipment wash down happens frequently and in dusty environments. This prevents any direct spray from opening check valves in the top cap. The Shield Wash-Down Cap is designed for use in food processing, mining, cement, pulp and paper facilities and outdoors. produces a nondrying, tack-free film on outer rope strands while quickly penetrating to the rope core and remains flexible, even in the most extreme weather conditions.







Whitmore and OilSafe are brands and registered trademarks of Whitmore Manufacturing, LLC. Established in 1893, Whitmore Manufacturing is an established manufacturer, that provides innovative products to increase the reliability, performance and lifespan of industrial assets. Whitmore offers high-performance lubricants, friction modifiers, application equipment, OilSafe offers lubrication management systems and desiccant breathers designed to meet the specific needs of each industry and application. Customers rely on Whitmore Manufacturing to deliver the performance engineered solutions industry counts on, even in the most adverse conditions. and demanding environments.

Whitmore Manufacturing maintains an industry-leading reputation for high-quality products and customer service. Whitmore mining products are offered outside North & South America (are sold in Brazil), and OilSafe products are offered worldwide through a distribution network committed to technical support and total customer satisfaction.

Whitmore Manufacturing is headquartered in Rockwall, Texas, and includes a fully integrated manufacturing plant, leading-edge research and development center, training facility and corporate offices.

**whitmores.com**  
**+44 1707.379870 | +1.972.771.1000**



08/2024